

K52-28

TANTALUM WET-SLUG CAPACITOR

elecond-market@elcudm.ru

+7 (34147) 2-99-89

AZHYAR.673543.017 TU

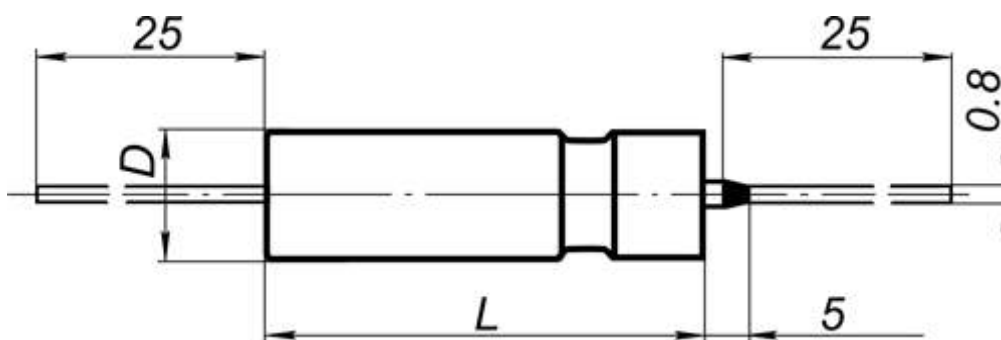


Hermetically-sealed polar capacitors in all tantalum case. Capacitors are suitable for application in direct current, ripple current and pulse current circuits. Capacitors are available in all-climate version.

MAIN PARAMETERS

Name	Value
Rated voltage, V	6.3...125
Rated capacitance, μF	15...3 300
Capacitance tolerance (20 °C, 50 Hz), %	± 10 ; ± 20
Maximum operating temperature T_{env} , °C	+125
Minimal operating temperature T_{env} , °C	-60

CAPASITOR PHYSICAL CONFIGURATION



CAPACITORS OVERALL DIMENSIONS AND MASS

U _R , V	6.3	10	16	25	32	50	63	100	125
C _R , μF	<u>DxL, mm</u> mass, g								
15									<u>7.5x22</u> 10
22								<u>7.5x22</u> 10	<u>7.5x22</u> 10
33							<u>7.5x22</u> 10	<u>7.5x22</u> 10	<u>9x30</u> 18
47						<u>7.5x22</u> 10	<u>7.5x22</u> 10	<u>9x30</u> 18	<u>9x30</u> 18
68					<u>7.5x22</u> 10	<u>7.5x22</u> 10	<u>7.5x22</u> 10	<u>9x30</u> 18	<u>9x30</u> 18
100				<u>7.5x22</u> 10	<u>7.5x22</u> 10	<u>9x30</u> 18	<u>9x30</u> 18	<u>9x30</u> 18	<u>11x32</u> 22
150			<u>7.5x22</u> 10	<u>7.5x22</u> 10	<u>9x30</u> 18	<u>9x30</u> 18	<u>9x30</u> 18	<u>11x32</u> 22	
220		<u>7.5x22</u> 10	<u>7.5x22</u> 10	<u>9x30</u> 18	<u>9x30</u> 18	<u>9x30</u> 18	<u>11x32</u> 22	<u>11x32</u> 22	
330	<u>7.5x22</u> 10	<u>7.5x22</u> 10	<u>9x30</u> 18	<u>9x30</u> 18	<u>9x30</u> 18	<u>11x32</u> 22	<u>11x32</u> 22		
470	<u>7.5x22</u> 10	<u>9x30</u> 18	<u>9x30</u> 18	<u>9x30</u> 18	<u>11x32</u> 22	<u>11x32</u> 22			
680	<u>9x30</u> 18	<u>9x30</u> 18	<u>9x30</u> 18	<u>11x32</u> 22	<u>11x32</u> 22				
1000	<u>9x30</u> 18	<u>9x30</u> 18	<u>11x32</u> 22	<u>11x32</u> 22					
1500	<u>9x30</u> 18	<u>11x32</u> 22	<u>11x32</u> 22						
2200	<u>11x32</u> 22	<u>11x32</u> 22							
3300	<u>11x32</u> 22								

CAPACITOR ELECTRIC PARAMETERS VALUE WHEN DELIVERED

U _R , V	C _R , μF	δ, %, max	I _{LEAK} , μA, max	ESR, Ohm, max
6.3	330	25	5.1	0.3
6.3	470	38	6.9	0.27
6.3	680	50	13.8	0.24
6.3	1000	63	19.9	0.21
6.3	1500	75	29.3	0.18
6.3	2200	88	42.5	0.15
6.3	3300	100	63.3	0.1

U_R, V	$C_R, \mu F$	$\delta, \%, \max$	$I_{LEAK}, \mu A, \max$	ESR, Ohm, \max
10	220	23	5.4	0.33
10	330	23	7.6	0.3
10	470	45	15.1	0.27
10	680	56	21.4	0.24
10	1000	67	31	0.21
10	1500	78	46	0.18
10	2200	89	67	0.15
16	150	21	5.8	0.35
16	220	31	8	0.32
16	330	41	16.8	0.29
16	470	51	23.5	0.26
16	680	61	33.6	0.23
16	1000	71	49	0.2
16	1500	81	73	0.17
25	100	19	6	0.38
25	150	28	8.5	0.35
25	220	36	17.5	0.32
25	330	45	25.7	0.29
25	470	53	36.2	0.26
25	680	62	52	0.23
25	1000	70	76	0.2
32	68	17	5.3	0.4
32	100	17	7.4	0.37
32	150	31	15.4	0.34
32	220	38	22.1	0.31
32	330	45	32.6	0.28
32	470	52	46.1	0.25
32	680	59	66.2	0.22
50	47	15	5.7	0.43
50	68	21	7.8	0.4
50	100	27	16	0.37
50	150	33	23.5	0.34
50	220	39	34	0.31
50	330	45	50.5	0.28
50	470	51	71.5	0.25

U_R, V	$C_R, \mu F$	$\delta, \%, \text{max}$	$I_{LEAK}, \mu A, \text{max}$	ESR, Ohm, max
63	33	13	5.1	0.45
63	47	18	6.9	0.42
63	68	22	13.8	0.39
63	100	27	19.9	0.36
63	150	31	29.3	0.33
63	220	36	42.5	0.3
63	330	40	63.3	0.27
100	22	11	5.4	0.48
100	33	14	7.6	0.45
100	47	17	15.1	0.42
100	68	20	21.4	0.39
100	100	23	31	0.36
100	150	26	46	0.33
100	220	29	67	0.3
125	15	9	4.7	0.5
125	22	11	6.5	0.47
125	33	13	13.3	0.44
125	47	15	18.6	0.41
125	68	17	26.5	0.38
125	100	20	38.5	0.35

CAPACITORS RELIABILITY

Reliability Operation modes	Minimal nonfailure operating time, t_A , hours
Maximum-permissible mode ($0.7U_R$, $T_{env}=125^\circ C$)	2 000
Maximum-permissible mode (U_R , $T_{env}=85^\circ C$)	10 000
Light mode ($0.6U_R$, $T_{env}=60^\circ C$)	150 000
Storageability Gamma-rated time of capacitor storageability T_{cy} at $y=97.5\%$, years, min	30

EXAMPLE OF REFERENCE DESIGNATION FOR ORDERING

CAPACITOR K52-28 – 6.3V – 3300 μ F \pm 10% AZHYAR.673543.017 TU